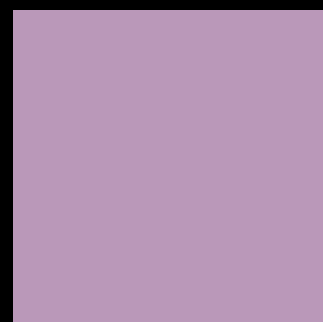
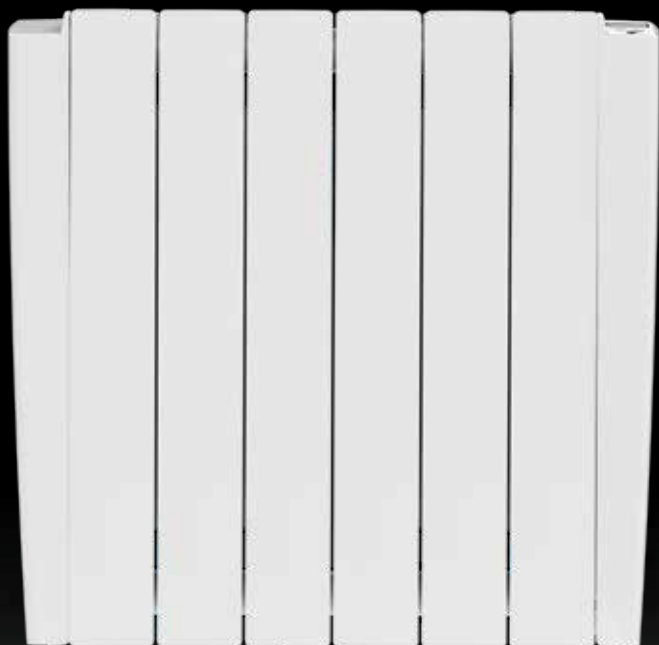




HENRAD

DISCOVER NAVALE



ELECTRICAL RANGE

GENERAL INFORMATION

NAVALE

The Navale is an oil filled radiator made with slim and compact vertical flat columns.

- Product: Electric horizontal radiator
- Pre-installed: Prefilled with oil, equipped with a thermostat and a 1,2 m insulated cable with plug.
- Also supplied: Brackets, screws, plugs, manual and remote control.
- Control: Operated via an integrated thermostat with weekly programming and open window detection.
- Packaging: Every radiator is sturdily packaged in high-quality cardboard and wrapped in plastic.
The radiator's characteristics are shown on the label: electric power – height – length.
- Warranty: 10 years for the radiator and 2 years for the electrical components, as long as the installation instructions have been followed, Henrad's warranty conditions have been met and the radiator is installed outside the splash area.
- Paint process: All radiators are degreased, phosphated, primed and powder-coated.
- Colours: Traffic white or anthracite grey
- Conformity: EcoDesign 2018 (EU Regulation 2015/1188)
- Technical data: Voltage 230 V ~ 50 Hz, IP24, Class II
- Height: 580 mm
- Lengths: 440 | 520 | 760 | 920 mm
- Depth: 90 mm
- Output: 700 | 1.000 | 1.500 | 1.800 W

Height	Length	Output	Art. N°.	Colour
H580	L440	700 W	7154B0580010440	Traffic white
			7154D0580010440	Anthracite grey
	L520	1.000 W	7154B0580010520	Traffic white
			7154D0580010520	Anthracite grey
	L760	1.500 W	7154B0580010760	Traffic white
			7154D0580010760	Anthracite grey
	L920	1.800 W	7154B0580010920	Traffic white
			7154D0580010920	Anthracite grey



ECODESIGN
2018 COMPLIANT



ELECTRICAL RANGE

MOUNTING AND INSTALLATION

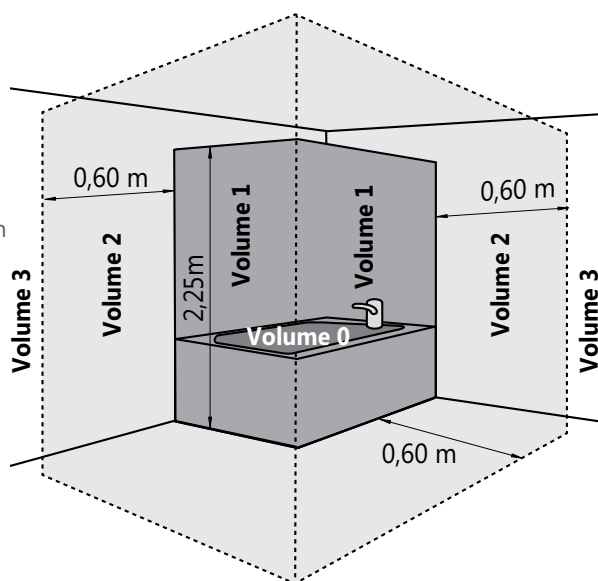
Since the Navale is a class II heater with an IP24 protection rating, it can be installed as such, in volume 2 or 3 of the bathroom (see figure), provided that it is shielded from water splashes and that the radiator is out reach of persons in the bath or under the shower.

Furthermore, when installed in volume 2, the radiator must additionally be shielded by means of a fixed wall.

The radiator must be installed with the control panel at the top and the electrical wire in the lower section. It is prohibited to install the radiator with the control panel below or on the side.

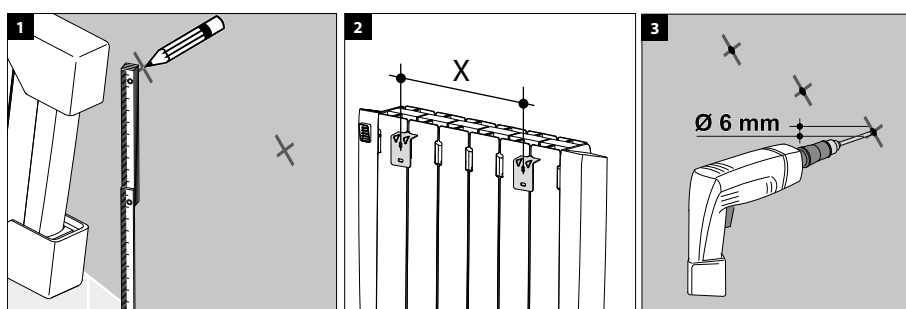
The appliance is insulated according to class II and is therefore not earthed. It needs to be powered by a single-phased current of 230V ~50 Hz.

The plug should be connected to a wall socket placed in volume 3.

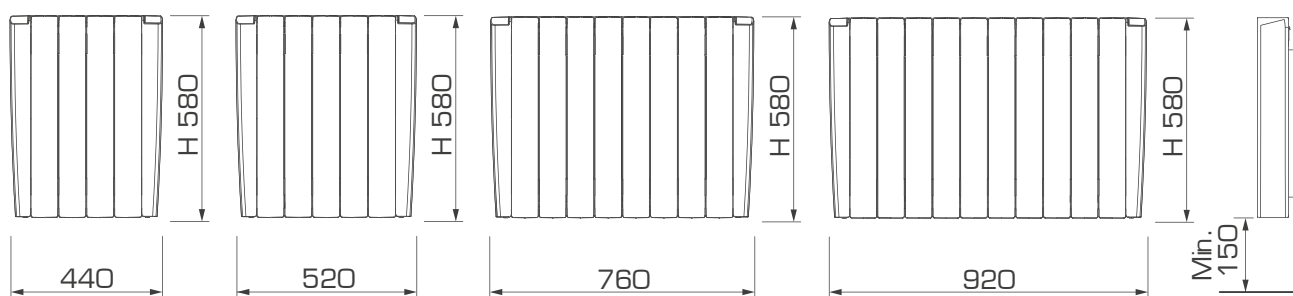


ATTENTION:

In France, the installation of electric radiators with plugs is prohibited.



W	X
700	161
1000	322
1500	563
1800	724

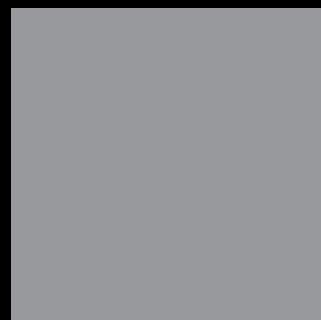


[click here](#)



The assembly instructions are available on [our website](#), technical data of Navale or via the QR-code:

Australia • Belgium • Cyprus • Czechia • France • Germany • Greece • Iceland • Lithuania
Luxembourg • Norway • Poland • Slovenia • Sweden • The Netherlands • Tunisia • Ukraine



HENRAD

Henrad nv
Welvaartstraat 14 box 6 • 2200 Herentals • Belgium

WWW.HENRAD.EU

